

Description of total refit

BJ22.001.01



Grand Soleil 52

'French Dragon'

General Data

Report of	: refit description
Order	: description refitted parts
Customer	: Mr. A. Schoonen
e-mail	: ad@schoonen.net
Date of survey	: 2010-2019
Place of survey	: Zaandam and Lelystad
Surveyor	: W.J. Blonk
Type of vessel	: Classic sailing Yacht
Brand and type	: Grand Soleil 52
Dimensions (meter)	: 16,30 x 4,70 x 2,80 (according specifications)
Year of construction	: 1989
Shape of Hull	: Round bilged with mounted Wing-Keel
Material of Hull	: GRP, partially sandwich
Yard	: Cantiere Del Pardo, Italy
Building number	: 522
Cadastral mark	: 25235 Z 2020
CE-certified	: In progress
CIN-code	: not present yet
Cadastral Mark	: 25235 Z 2020
Propulsion	: inboard Marine Diesel engine with propeller shaft installation
Engine	: Volvo Penta type TMD31A/100
Serial number	: 2203109690

Additional information:

A part of the above mentioned information is provided by third parties. The correctness can't be guaranteed.

Important note:

The inspections during constructions are done with the best intentions but the Yard is always responsible for the quality and guarantee of the delivered yacht, all components and installations



Introduction

This report is a global description of an extensive refit between 2010 and 2019 of the Grand Soleil 52 'French Dragon'.

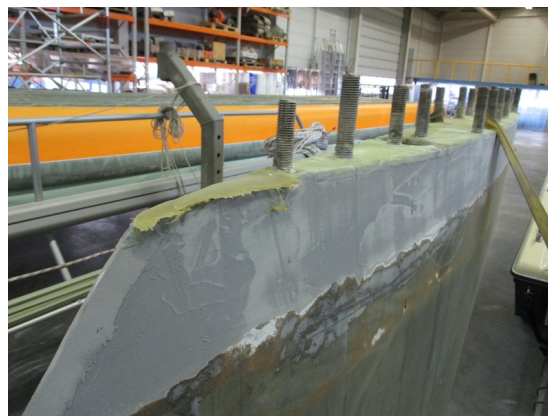
The yacht 'French Dragon' is completely refitted/rebuild. There are almost no parts and area's which are not refitted or renewed or refitted. During the refit, which is performed between 2010 and 2019, undersigned was surveyor for the customer in the period between 2014 and 2019.

The hull below the waterline, hull above the waterline, decks and superstructure are complete repainted including new portholes. Teak is renewed at all decks, superstructure and cockpit. The complete rigging included mast, boom, furlers and poles are renewed included all sails and sail covers. Deck fittings, bollards and rigging equipment, blocks, rails, guardrail, too rails, spray hood and Bimini are all new. All technical installations and electrical installations are completely renewed. The engine is overhauled including the propeller shaft installation. Instruments and equipment is new installed. A real eye catcher of this Grand Soleil is the rebuild and custom made interior which is completely restyled and unique for this type of yacht.

More in detail the following is performed in the period 2010-2019:

Hull below the waterline:

- The keel is dismantled, sandblasted and recoated with 2 –component epoxy coating and Coppercoat. The flange of the keel is rebuild and made wider for a better keel-hull connection;
- Keel garage in the hull is rebuild for better keel-hull connection;
- The hull below the waterline is sanded till the gelcoat. After that a epoxy primer is applied including a Coppercoat epoxy based antifouling is applied;
- The Maxprop propeller is revised and mounted;
- The outer propeller bearing is renewed;
- A retractable new bow thruster is installed;
- New earth plates are mounted;
- New coolers for the fridges are mounted;





Hull above the waterline

- The GRP hull above the waterline is sanded, repainted with epoxy primer and finished with two component high gloss coating including new striping's, ships type, ships name and French Dragon logo's;
- A completely new custom made stainless steel swimming platform is mounted including teak parts.

Deck, superstructure and cockpit

- Complete new customized anodized aluminum too rails including new scepter pots, scepters and wires;
- New custom made push pits with teak seats;
- New custom made pulpit;
- New side entrances;
- Coating in cockpit, sides of the gangways and the superstructure are sanded and painted with two component epoxy paint including striping at the superstructure;
- All portholes are renewed by polished massive stainless steel portholes with acrylic;
- All deck hatches are renewed by polished massive stainless steel hatches with acrylic;
- New bollards are mounted
- Complete new massive teak at all decks;
- Complete massive teak in the cockpits and bridge decks;

- New cabin entrance;
- New stainless steel grids for the ventilation of the engine room;
- New Bimini with stainless steel frames;
- New spray hood with double canvas layer with new stainless steel frame;
- New sun tent;
- New support for the dingy outboard;
- New custom made stainless steel Davits;
- New aluminium gangway with teak parts;
- New winch covers
- New electric anchor winch;
- New stainless steel chain;
- New flag pole ;
- New instrument pod at the helm;
- New spare aluminium Fortress Anchor





Rigging

The complete rigging is renewed including mast, boom, spinnaker poles, standing rigging, running rigging and new sails. The rigging is improved, the furling main and mast are replaced by a hoisting main for better sailing performance.

- New anodized aluminum mast including new lights, cables, antenna's;
- New anodized aluminum custom made boom with frame;
- New fittings at mast and boom;
- 2 new spinnaker poles;
- New rodkicker;
- New standing rigging;
- New cutter stay including new Wichard tensioner;
- New hydraulic backstay tensioner;
- Two New jib furlers;
- New main sail, cutter jib, genua, double jib, trysail and storm jib
- All hand winches and electric winches are refitted, the drums has a new chrome layer;
- New buttons for electric winches;
- All deck fittings for the rigging are renewed as genua and jib rails, blocks;
- New halyards stoppers and guide blocks;
- New Lazy bag system;
- New Rocon covers;



Steering system

- New leather around the wheel;
- New helm, customized;
- New steering cables;

Hull inside

- All visible parts of the inside of the hull are repainted;
- All seacocks are renewed;
- Storages in the cockpit and aft peak are repainted;
- Chain plate construction is strengthened.



Interior

The interior is extensive refitted and restyles. Approx. 40% of the wood work is renewed and new veneer is applied. At lot of interior parts as the mast casing, panels for cupboards, the cabin stairs and panels light ash wood veneer is applied which makes this interior unique and special. There is no other Grand Soleil 52 with an interior like this. The table in the saloon is real piece of art with a wind rose made of different colors of wood veneer.

- Complete new workshop/storage made in the front peak including new panels, complete coated and varnished;
- All ceiling parts are renewed;
- All white coated surfaces are sanded and recoated with two-component high gloss epoxy coating;
- New casing around the engine compartment;
- Table in the main cabin has new veneer and is a real piece of art with wind rose;
- Couch, cabin stairs, cupboards, mast cove and many other parts has new veneer form ash wood which makes the interior unique;
- All closures and push buttons are renewed by nice chrome closures and buttons
- All countertops including sinks are custom made and renewed by Corian;
- New coves are made around the electro winches in the aft cabin;
- All mattresses are renewed;
- All cushions are renewed;
- New open cupboards, new lining and new mirrors;
- The front toilet room with shower is complete rebuild with new wood, veneer, Corian blade and sink, new toilet and new cupboards;
- All woodwork is varnished at first with two component varnish.





Electrical installations

All electrical installations, components wires switches, panels are removed. Complete new installations are installed including new components. Batteries and battery cables are completely renewed.

- All main switches and switch panels are renewed;
- New battery chargers for the service battery bank, starter batteries and bow-thruster batteries are installed;
- All batteries are renewed;
- New automatic fuses are installed for all groups and users;
- All battery cables are renewed;
- All interior lights are renewed, LED spots and LED readings spots including dimmers;
- New night lights, new lights in the engine-room;
- All navigation lights are renewed on deck and in the mast;
- New deck lights are installed;
- New Onan-Yanmar diesel generator (1500 rpm) is installed in the engine-room at a customized stainless steel frame included master switch and panel;
- New shore power installation including new connections, automatic fuses, wires etc.;
- New inverter is installed;
- New switches and new sockets



Technical installations

All technical installations are renewed. Almost all components are renewed, except the tanks. Pumps, all hoses, pipes, seacocks are renewed.

- All hoses for fresh water, seawater, fuel, grey water and black water are renewed;
- Water and fuel tanks (stainless steel) are cleaned;
- Complete new freshwater system with new tabs , pipes and hoses;
- Freshwater pumps, deck wash pump, bilge pumps, shower pumps and the fuel pump are renewed;
- New diesel heated stove is installed;
- New diesel air heater is installed including new air ducts;
- New electric toilet installed in the rear toilet room;
- New holding tank installed for the rear toilet;
- New hand operated toilet installed in the front toilet room;
- New water maker is installed;
- Hydraulic installation for the hydraulic back stay is partially renewed;
- New hot water boiler is installed;
- New showers and new cockpit shower is installed;
- New fridge drawers are installed;
- New fridge and freezer in the galley installed;



Instruments

- The complete audio system is renewed, Fusion system in the main cabin, owners cabin and in the cockpit;
- All navigation instruments are renewed by B&G like echo sounder, log, GPS, Plotter, navigation computer, repeaters, wind meter, Radar, autopilot (except hydraulic drive);
- New VHF's, cables and antenna's;
- New AIS;
- New TV with antenna

Propulsion installation

- The diesel engine is completely revised, repainted and all hoses are renewed;
- Wiring between engine and motor panel is renewed;
- Reduction gear is revised
- Thrust bearing is revised/checked;
- Propeller shaft seal is renewed.